



CONVEYOR COMPONENTS COMPANY

130 Seltzer Road, PO Box 167 • Croswell, MI 48422 USA

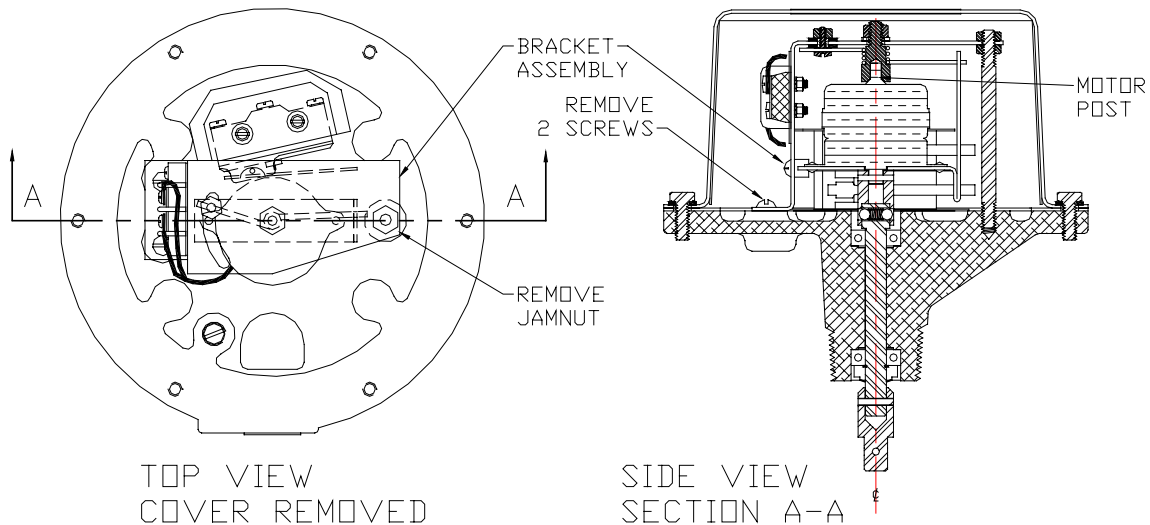
PHONE: (810) 679-4211 • TOLL FREE (800) 233-3233 • FAX: (810) 679-4510

Email: info@conveyorcomponents.com • <http://www.conveyorcomponents.com>

MODEL CR REPLACEMENT MOTOR INSTRUCTIONS

1. Turn off power to level indicator. Be sure to disconnect both supply and control circuits.
2. Remove cover.
3. Verify that the new motor assembly is the same voltage as the old motor assembly. The voltage rating is on the side of the motor.
4. Test all conductors with a meter to verify that all power has been removed. Remove wires from motor terminal block.
5. Remove two (2) screws and 1/4" jam nut holding the bracket assembly. Do not remove the lower jam nut.

Figure 1: Motor Assembly



6. Remove bracket and motor assemblies from the unit.
7. Disconnect torsion spring from the motor bracket and remove the motor assembly.
8. Save and reuse the following parts:
 - Bracket assembly
 - 2 screws and jam nut

9. Remove and discard:
 - Motor assembly
 - Teflon clutch washer
10. Apply a small amount of grease on the motor post.
11. Install in order:
 - Motor assembly with Teflon washer on motor shaft.
 - Attach torsion spring to motor bracket.
 - Bracket assembly.
 - 2 machine screws to base of bracket assembly (do not tighten now).
 - 1/4" jam nut to motor post (do not tighten now).
12. When properly installed, the motor should be in line with the shaft of the level indicator.
13. When properly aligned, tighten the (2) screws holding the bracket assembly.
14. There should be 1/16 [1 1/2 millimeters] vertical travel in the motor between the bracket assembly and clutch housing.
15. To increase or reduce the vertical spacing, adjust the two (2) jam nuts on the post to move the bracket up or down.
16. Verify that the motor will still move vertically, and tighten the 1/4" jam nuts.
17. Connect motor leads to terminal block.
18. Turn motor supply power on and verify that motor is running and the paddle is turning.
19. Install cover.
20. Turn on power to the control circuits.