

MODEL FA CONVEYOR BELT CLEANER

WITH EXCLUSIVE "FLOAT ACTION" SPRINGS

- SAVE ON CLEAN-UP EXPENSE
- NEW SPRING DESIGN GREATLY INCREASES SPRING AND BLADE LIFE
- STOPS BELT RUN-OFF
- ELIMINATES BUILD-UP ON RETURN IDLERS
- EASY TO INSTALL
- AVAILABLE FOR ANY SIZE BELT
- EXTENDS BELT LIFE
- INEXPENSIVE
- REMOVES WET, DRY OR STICKY MATERIALS

The MODEL FA cleaner effectively cleans any type material, wet, dry or sticky from conveyor belts. Spring and blade life are greatly increased by the exclusive floating spring design. Thus, the cleaner pays for itself many times over by reducing clean-up and cleaner maintenance expenses. Idler build-up and belt misalignment are also eliminated. Cleaners are shipped assembled and ready to install and will adjust easily to fit any size conveyor frame.

The Model FA definitely will not harm metal belt splices. It's designed for use on belts with either mechanical or vulcanized splices!

QUICK-CHANGE ACTION

The design of the Model FA cleaner is such that maintenance can be performed quickly and with very little effort. The entire blade arm and angle assembly, together with the adjusting handle, can be withdrawn from underneath the belt or through a door in the chute for quick maintenance to the arm and blade assembly. This is accomplished by loosening the locking handle which permits the entire assembly to slide off the support pipe.

HOW "FLOAT ACTION" WORKS

A "sandwich" is constructed from two pads of high quality rubber. Our spring arm is then allowed to "float" between them. Two bolts through the rubber and arm clamp the assembly securely to the spring support angle. The rubber then absorbs the majority of the spring's flexing thereby increasing its life. Spring arm construction is of the highest quality, specially processed spring steel.



HANGER MOUNTED UNIT SHOWN. FLANGE MOUNTED UNIT FOR CHUTE WALLS IS AVAILABLE.

RIGHT HAND UNIT SHOWN

HANGER BRACKET

SPRING ARM ASSEMBLY

WIPER BLADE

HANGER BAR

SPRING SUPPORT ANGLE

TUBE

ADJUSTING HANDLE

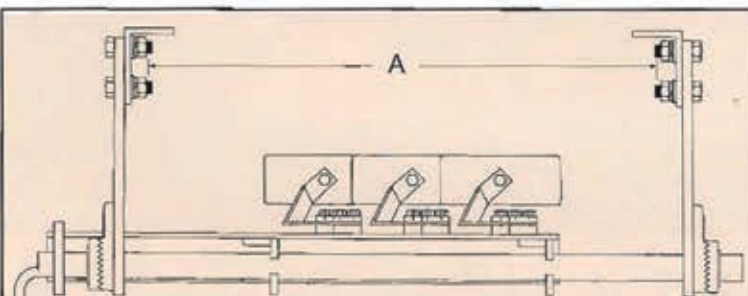
LOCKPLATE

TUBE HOLDER

LOCKING HANDLE

PARTS DESCRIPTION & ORDERING INFORMATION

The FA cleaner is designed to permit easy servicing of the wiper blade assembly, even while the conveyor is running! Just remove the locking handle, lower the blade assembly, and slide it off the support pipe. The wiper blades can then be serviced and the whole assembly easily reinstalled.



Right hand units will be furnished unless otherwise specified. A right hand unit will have the adjusting handle on the right hand side when facing the direction of travel of the load on the conveyor belt. Dimension "A" adjusts to fit conveyor frame with a minimum of 5" greater than the belt width and a maximum of 21" greater than the belt width.

ORDERING INFORMATION

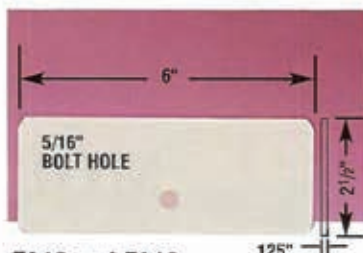
Simply specify the belt size and the blade style desired. The cleaner is then supplied with the proper number of blades and springs to clean the size belt. The spring support angle and the tube are supplied extra long and cut in field by customer to suit the conveyor frame. The cleaner will adjust to fit frames up to 24" wider than the belt width ordered. Refer to blade styles show on right.

INSTALLATION INSTRUCTIONS

Ease in installation is a major feature in the MODEL FA cleaner. The hanger bars are located on either side of the conveyor frame so that the center of the belt cleaner tube is approximately 8" below belt. Allow room on one side for ease in servicing unit. Blade contact should be at least 1/2" from point at which belt leaves pulley. The spring support angle slides over the tube and the blades are centered under the belt. The handle is then positioned on the angle and held in place by a set screw. The spring support angle and the tube are supplied extra long to allow field adjustment to any size conveyor frame. The locking handle holds the adjusting handle at the desired blade pressure point. Actually very little blade pressure is needed to clean the average belt. Usually two to three pounds per spring is sufficient. Unnecessary pressure will only cause premature blade wear. Belt should be flat where cleaner engages it and any extreme projections on metal splice filed down.

CHOICE OF SEVEN BLADE STYLES

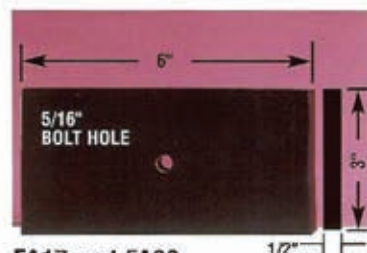
Width of belt in inches	8	12	16	18	20	24	30	36	42	48	54	60	72
Number of wiper blades	2	3	4	4	5	6	8	9	11	12	14	16	19



FA16 and FA18

FA16 - High quality stainless steel. Longer wearing and corrosive resistant. 1/8" thick.

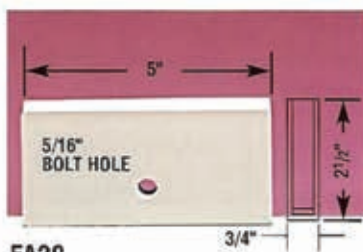
FA18 - Heat treated spring steel for standard applications and noncorrosive materials. 1/8" thick.



FA17 and FA23

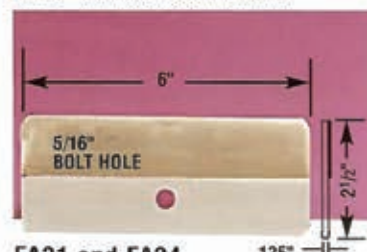
FA17 - 80 durometer SBR rubber blade. Compounded to correct hardness for most effective belt cleaning. Inexpensive and long lasting for applications involving gentle cleaning.

FA-23 - 90 durometer urethane.



FA20

High quality ceramic blade for extra long wear characteristics. Specially formed stainless steel holder protects against chipping.



FA21 and FA24

FA21 - Nickel alloy stainless steel wiper blade, long wearing.

FA24 - Solid tungsten carbide strip brazed to steel. For highly abrasive applications. Not recommended for belts with mechanical splices.

SPRING ARM

The spring arm assembly is shown with the patented rubber mounting.

