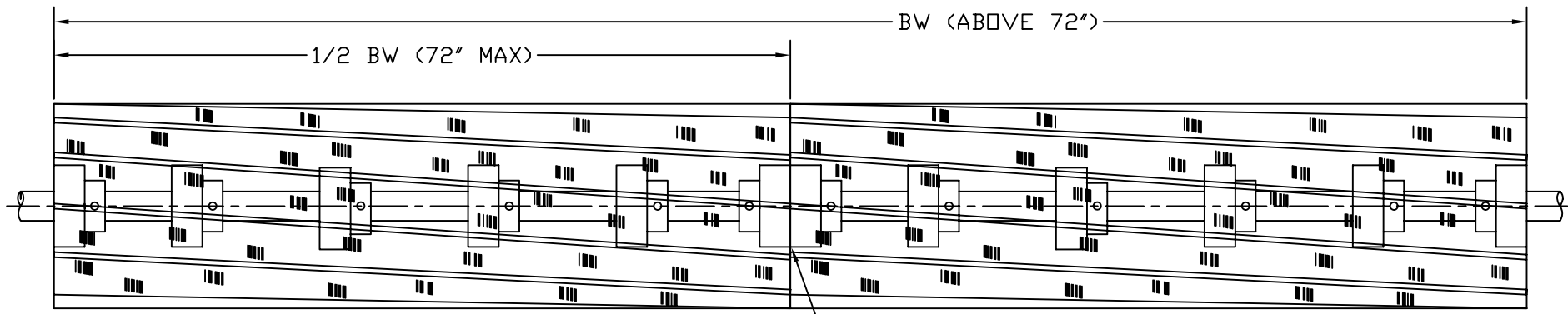
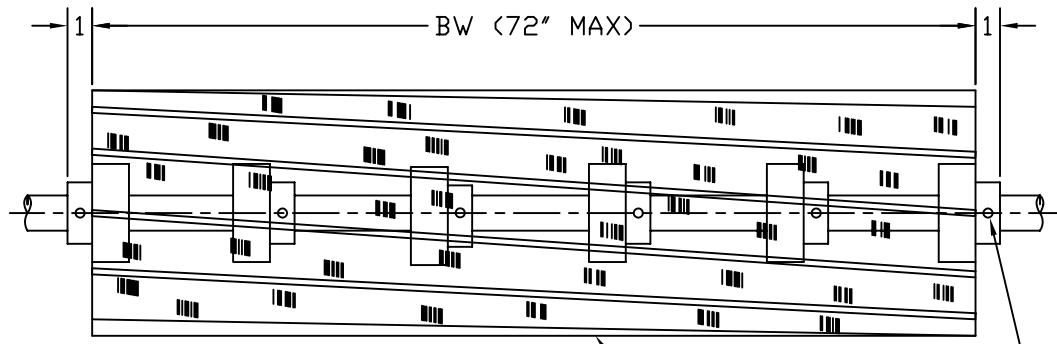


REVISIONS				
REV.	E.C.O.	DESCRIPTION	DATE	BY APP'D
B	2016	CHANGE HUB LISTING / ADD NOTE	02/19/02	GL JK

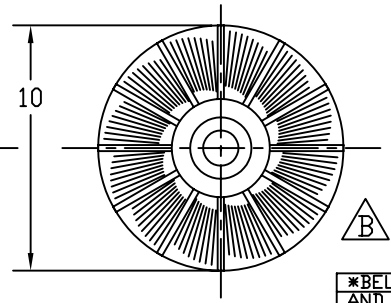


INVERTED HUBS FOR BRUSHES LARGER THAN 72".



BRISTLES

HUB ASSEMBLIES INCLUDING SET SCREWS.
 # BR-2A: 1 7/16 HUB ASSEMBLY.
 # BR-2B: 1 15/16 HUB ASSEMBLY.



NOTES:
 BRISTLES ARE AVAILABLE IN
 NYLON: 0.014", 0.028", & 0.040" DIA.
 POLYPROPYLENE: 0.014", 0.028", & 0.040" DIA.
 OIL TEMPERED WIRE: 0.010" DIA.
 12 BRISTLE STRIPS REQ'D PER BRUSH / SET.

*ROUND UP FOR IN-BETWEEN SIZES.
 I.E: A 25" BRUSH = 5 HUBS.

**UNITS ABOVE 72" ARE MADE WITH 2 SMALLER BRUSHES AND INVERTED HUBS.
 BW/2=BRUSH USED TWICE.
 I.E: AN 84" BRUSH IS MADE OF TWO 42" BRUSHES WITH HUBS FOR A 1 15/16" DIA. SHAFT (12 HUBS TOTAL).

*BELT WIDTH UP TO AND INCLUDING; 'BW'	HUB QTY	HUB BORE SIZE	SET SCREW QTY
6	2	1 7/16	4
8	2	1 7/16	4
12	3	1 7/16	6
16	3	1 7/16	6
18	3	1 7/16	6
20	4	1 7/16	8
24	4	1 7/16	8
30	5	1 7/16	10
36	6	1 7/16	12
42	6	1 7/16	12
48	7	1 15/16	14
54	8	1 15/16	16
60	9	1 15/16	18
72	10	1 15/16	20
**84	12	1 15/16	24
96	14	1 15/16	28
108	16	1 15/16	32

THIS DRAWING IS COMPUTER GENERATED.

DWN RM	DATE 2/25/88	CONVEYOR COMPONENTS CO.	
CKD	DATE	130 SELTZER RD, CROSWELL, MI 48422	
APD JK	DATE 4/25/88	MODEL HS HELICAL ROTARY BRUSH	

THIS PRINT IS THE PROPERTY OF CONVEYOR COMPONENTS CO. AND MUST NOT BE USED IN WHOLE, OR PART WITHOUT WRITTEN PERMISSION. PLEASE RETURN ON DEMAND.

PART NO.	DWG. NO. C0040007	REV. B
SCALE 1/4"=1"	SHT. 1-1	

DWG. NO. C0040007 SHT. REV. B