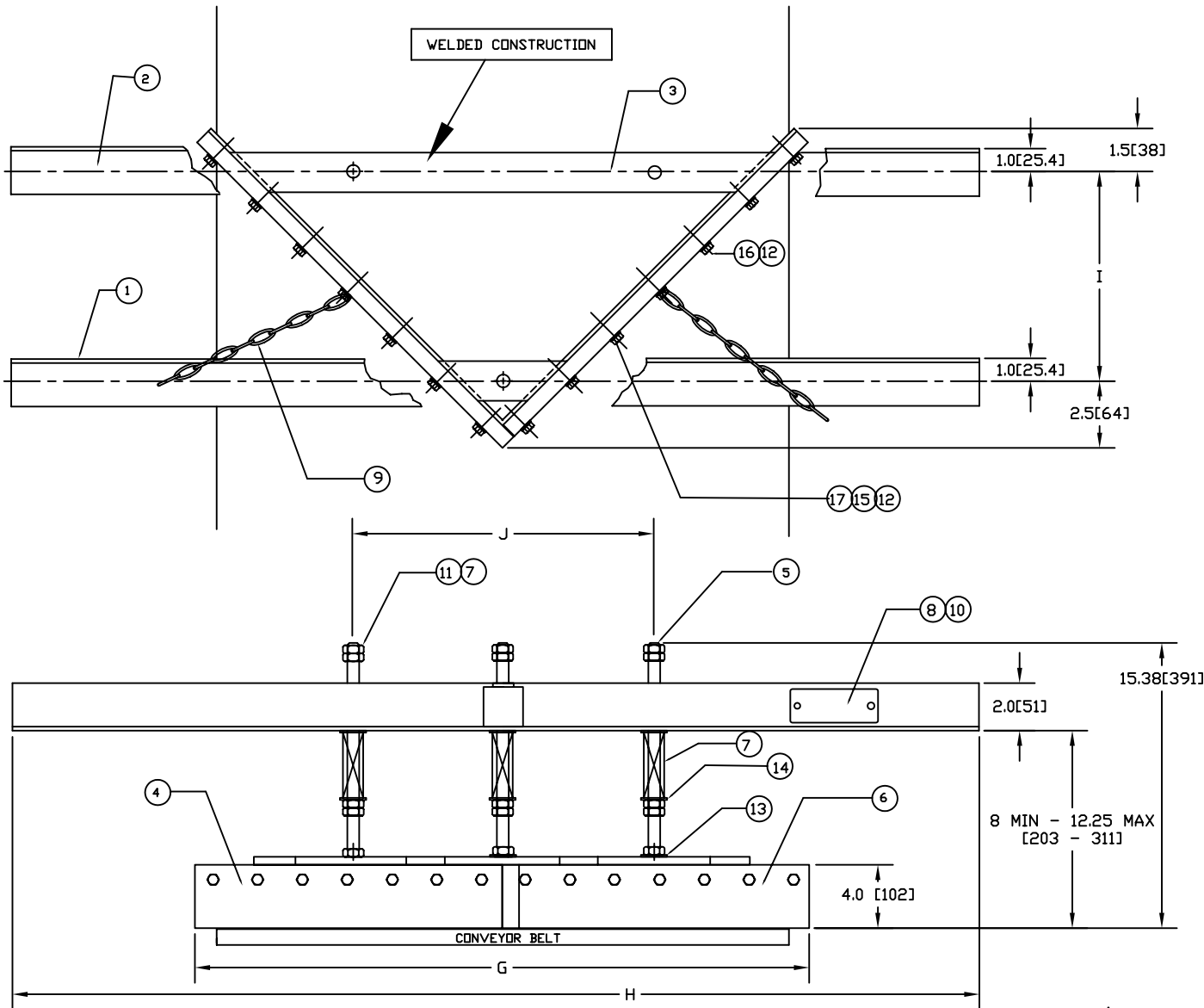


| REVISIONS |        |                                      |          |    |       |
|-----------|--------|--------------------------------------|----------|----|-------|
| REV.      | E.C.O. | DESCRIPTION                          | DATE     | BY | APP'D |
| C         | 2272   | CORRECT PART NUMBER; ADD METRIC DIMS | 12/10/03 | GL | JK    |



| ITEM | PART NO. | DWG NO.    | DESCRIPTION             | QTY. |
|------|----------|------------|-------------------------|------|
| 17   | 20191104 | A-201-1104 | 5/16-18 X 1-1/2 HH.C.S. | 2    |
| 16   | 22011153 | A-201-1153 | 5/16-18 X 1 1/4 HH.C.S. | F    |
| 15   | 22013101 | A-201-3101 | 5/16 FLATWASHER         | F    |
| 14   | 22013104 | A-201-3104 | 5/8 FLATWASHER          | 6    |
| 13   | 22013503 | A-201-3503 | 5/8 LOCKWASHER          | 2    |
| 12   | 22014101 | A-201-4101 | 5/16-18 NYLON LOCKNUT   | F    |
| 11   | 20294601 | A-201-4601 | 5/8-11 HEX NUT          | 18   |
| 10   | 22016101 | A-201-6101 | DRIVE RIVET             | 2    |
| 9    | 20290003 | A-29-15    | SAFETY CHAIN            | 2    |
| 8    | 20370001 | A-037-0007 | NAME PLATE              | 1    |
| 7    | 20296548 | A-201-6548 | SPRING                  | 1    |
| 6    | J        | B-29-59-BW | LEFT RUBBER BLADE       | 3    |
| 5    | 20290004 | A-29-2     | THREADED ROD            | 3    |
| 4    | C        | B-29-41-BW | RIGHT RUBBER BLADE      | 1    |
| 3    | 20290134 | C-29-38    | FRAME WELDMENT          | 1    |
| 2    | B        | B-29-3-BW  | REAR FRAME SUPPORT      | 1    |
| 1    | A        | B-29-4-BW  | FRONT FRAME SUPPORT     | 1    |

THIS DRAWING IS COMPUTER GENERATED.  
 CONVEYOR COMPONENTS CO.  
 130 SELTZER RD, CROSWELL, MI 48422  
 PLOW TYPE BELT CLEANER 12-24"

THIS PRINT IS THE PROPERTY OF CONVEYOR COMPONENTS CO. AND MUST NOT BE USED IN WHOLE, OR PART WITHOUT WRITTEN PERMISSION. PLEASE RETURN ON DEMAND.

DATE: 04/25/80  
 DATE: 12/05/88

PART NO. DWG. NO. C0290001 REV. C  
 SCALE N.A. SIZE C SHT. 1-1

| BELT WIDTH | A        | B        | C        | D        | E  | F  | G        | H         | I        | J          |
|------------|----------|----------|----------|----------|----|----|----------|-----------|----------|------------|
| 12 [305]   | 20290030 | 20290018 | 20290087 | 20290140 | 6  | 4  | 14 [356] | 36 [914]  | 4 [102]  | 8.5 [216]  |
| 16 [406]   | 20290031 | 20290019 | 20290088 | 20290141 | 8  | 6  | 18 [457] | 40 [1016] | 6 [152]  | 12.5 [318] |
| 18 [457]   | 20290032 | 20290020 | 20290089 | 20290142 | 8  | 6  | 20 [508] | 42 [1067] | 7 [178]  | 14.5 [368] |
| 20 [508]   | 20290033 | 20290021 | 20290090 | 20290143 | 10 | 8  | 22 [559] | 44 [1118] | 8 [203]  | 16.5 [419] |
| 24 [610]   | 20290034 | 20290022 | 20290091 | 20290144 | 12 | 10 | 26 [660] | 48 [1219] | 10 [254] | 20.5 [521] |

DWG. NO. C0290001 SHT. REV. C