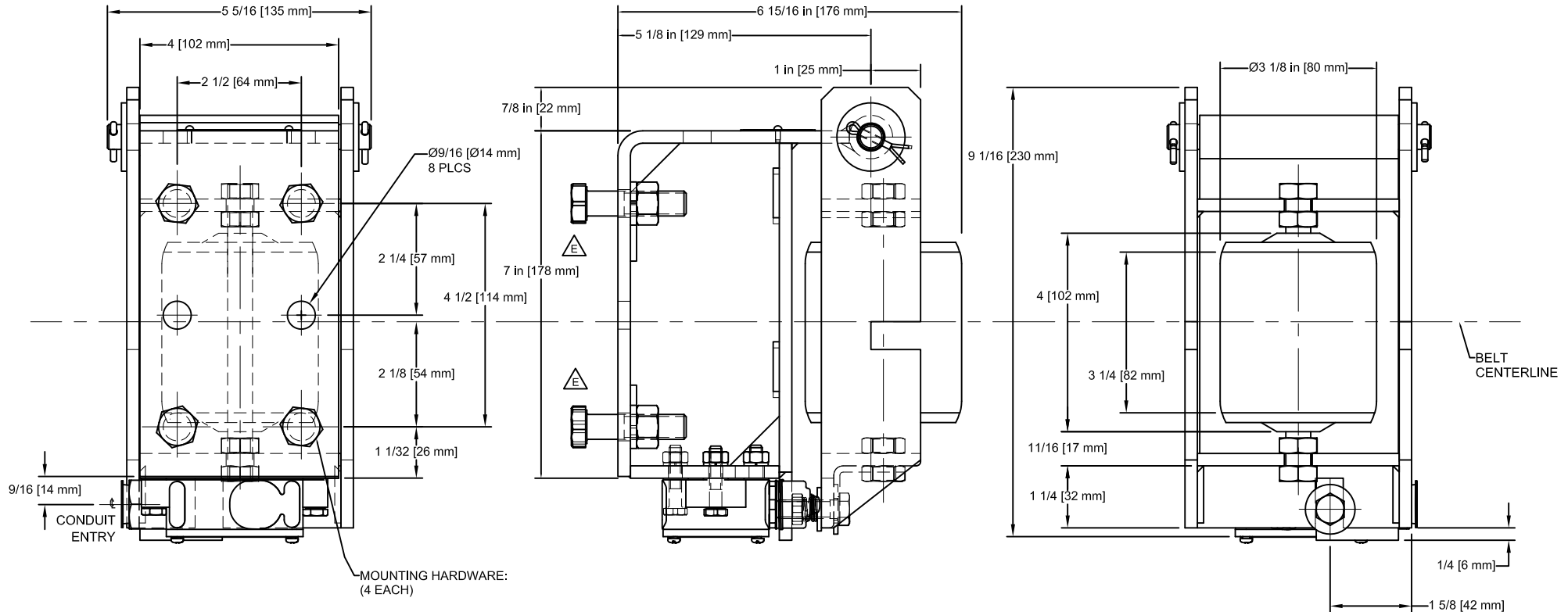


| REV | ECO | DESCRIPTION | DATE | BY | APPD |
|-----|------|-------------------------|------------|----|------|
| E | B858 | UPDATE HARDWARE AND DWG | 10/15/2015 | GL | DLG |



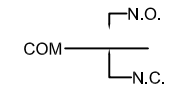
Ø9/16 [Ø14 mm]
8 PLCS

MOUNTING HARDWARE:
(4 EACH)
1/2-13 X 2 HEX HEAD CAP SCREW Z/P
1/2" LOCKWASHER Z/P
1/2-13 HEX NUT Z/P

1/2"-14 NPT CONDUIT ENTRY.
FOR WIRING, REMOVE SHIPPING
PLUG IF PRESENT

MICRO SWITCH BAF1-2RN-LH

- 20 AMPS @ 125V OR 250V AC
- 10 AMPS @ 125V AC "L"
- 1 HP @ 125V AC
- 2 HP @ 250V AC
- 1/2 AMP @ 125V DC
- 1/4 AMP @ 250V DC



REFER TO BOM FOR PARTS LIST.
ALL DIMS ARE REFERENCE.
DIMS IN [] ARE IN MILLIMETERS.

RECOMMENDED SPARE PARTS:
1 EA. SPRING 20066445

| | | | | | |
|---|------|------------|--|---|-----|
| DRAWN | | 6/28/1988 | | Conveyor Components Company Division of Material Control, Inc. 139 Siltzer Road, Crossville, Michigan 49422 U.S.A. | |
| CHECKED | DLG | 10/27/2015 | | TITLE | |
| APPROVED | JK | 6/28/1988 | MODEL BA-1 BELT ALIGNMENT CONTROL | | |
| PART | BA-1 | | Drawing is computer generated, and print might not be to scale | | |
| THIS PRINT IS PROPERTY OF CONVEYOR COMPONENTS CO., AND MAY NOT BE USED IN WHOLE OR PART WITHOUT WRITTEN PERMISSION. | | | SIZE | D | REV |
| | | | SCALE | D0060001.dwg | E |
| | | | SHEET 1 of 1 | | |