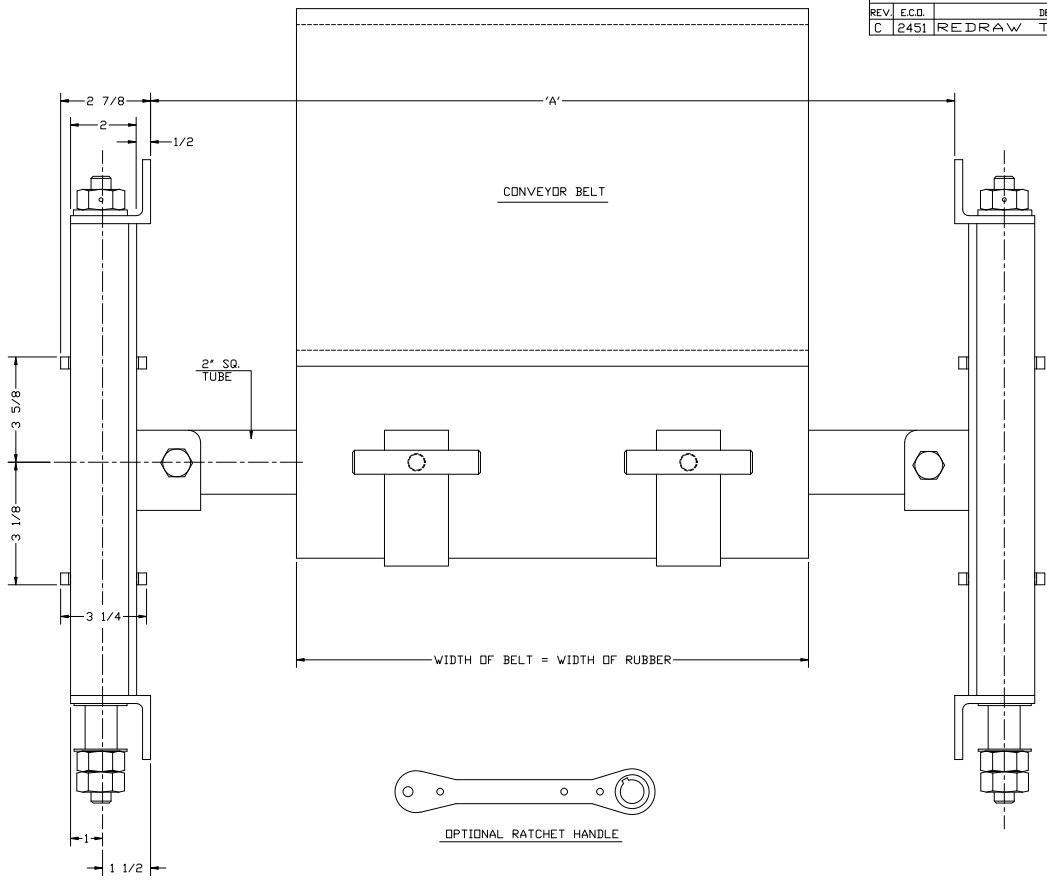
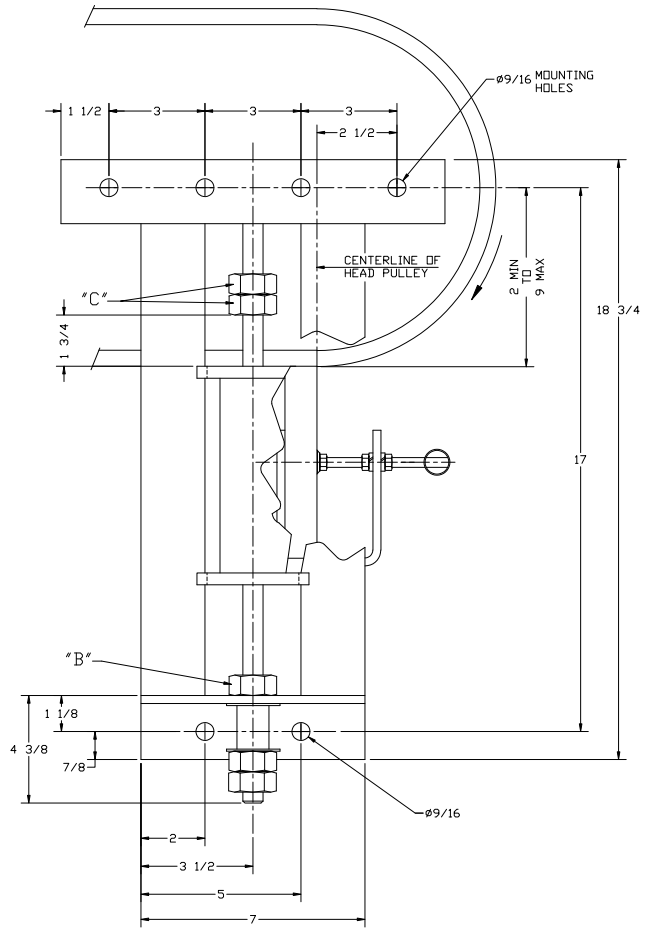
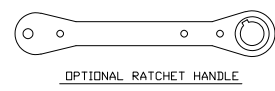


DWG. NO. D0100005		SHT. 1-1	REV. 6
REVISIONS			
REV.	ECO.	DESCRIPTION	DATE BY APP'D
C	2451	REDRAW TO COMPUTER	08/08/96 RM JK



BELT SIZE	'A'	
	MAX	MIN
12	35	15
16	39	19
20	43	23
24	47	27
30	53	33
36	59	39
42	65	45
48	71	51
54	77	57
60	83	63
66	89	69
72	95	75
78	101	81
84	107	87
92	115	95



- INSTALLATION INSTRUCTIONS
1. MOUNT SIDE FRAMES ON CONVEYOR FRAME OR CHUTE, SO THAT FIRST MOUNTING HOLE IS 2-1/2 IN. AHEAD OF PULLEY CENTERLINE AND 4 IN. TO 7 IN. ABOVE THE BOTTOM SURFACE OF BELT.
 2. MEASURE BETWEEN THE INSIDE SURFACES OF THE SLIDES AND CUT THE SUPPORT TUBE 1/4 IN. SHORTER THAN THIS DIMENSION.
 3. PLACE THE SUPPORT TUBE IN THE SOCKETS AND MARK FOR THE TWO BOLTS.
 4. DRILL THE ENDS OF THE TUBE WITH A 9/16 DRILL AND BOLT IN PLACE.
 5. ADJUST WIPER UP UNTIL EVEN CONTACT IS MADE WITH BELT BUT NO PRESSURE IS APPLIED.
 6. TO LOAD THE WIPER, TURN THE RODS 20 TURNS AND LOCK USING NUTS "B"
 7. LOCATE NUTS "C" 1-3/4 IN. ABOVE SLIDE TO PREVENT THE SUPPORT FROM CONTACTING THE BELT.
 8. THE WIPER WILL NOW SELF ADJUST UNTIL THE STOP NUTS ARE CONTACTED AT WHICH POINT IT CAN BE TURNED OVER AND ADJUSTED PER STEPS 5 THRU 7.

THIS DRAWING IS COMPUTER GENERATED.

DWN	CLD	DATE	11/10/80	CONVEYOR COMPONENTS CO. 130 SELTZER RD, CROSWELL, MI 48422
CKD		DATE		
APD	CLD	DATE	11/10/80	MODEL LP-V INSTALLATION
THIS PRINT IS THE PROPERTY OF CONVEYOR COMPONENTS CO. AND MUST NOT BE USED IN WHOLE, OR PART WITHOUT WRITTEN PERMISSION.				
PART NO. LP-V		DWG. NO. D0100005	REV. C	SCALE HALF
PLEASE RETURN ON DEMAND.			SHT. 1-1	

DWG. NO. D0100005 SHT. REV. 1-1 E