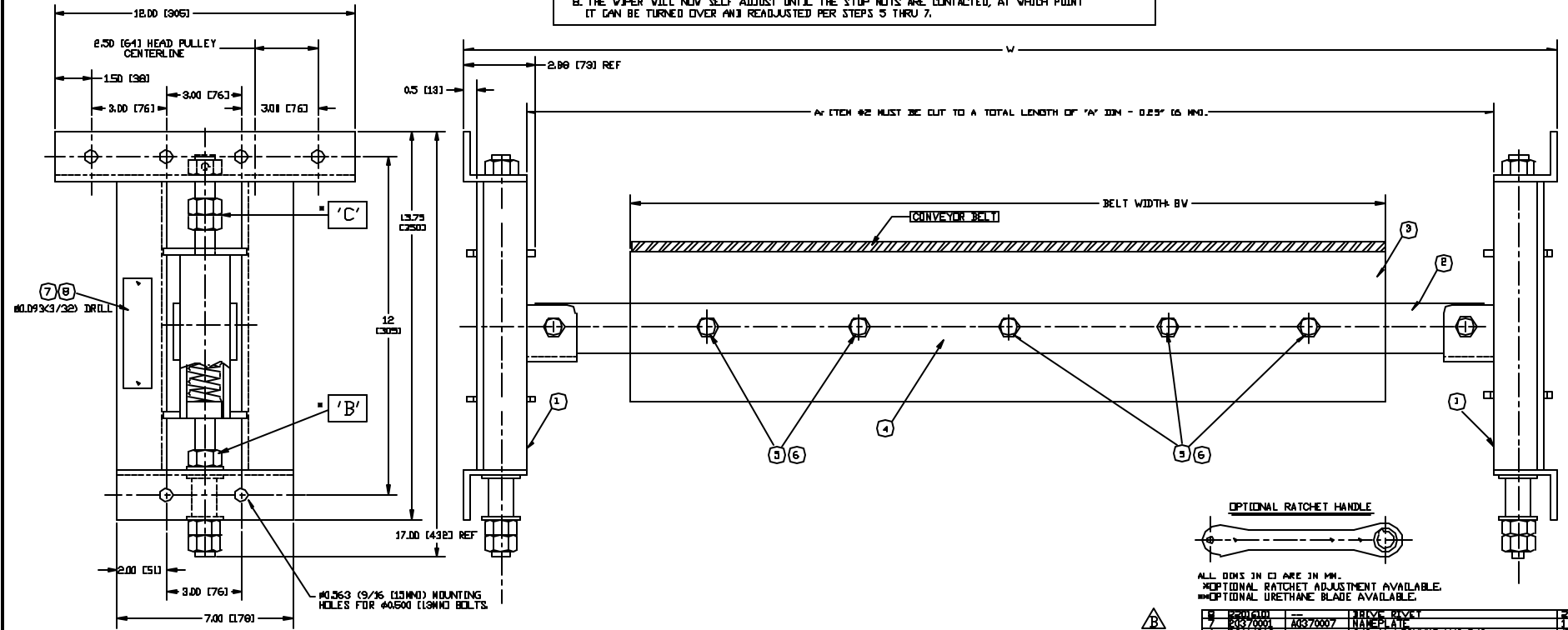


DWG. NO.	D0100037	SHT. REV.	1
REVISIONS			
REV.	NO.	DESCRIPTION	DATE
B	2222	CORRECT TUBE REFS	08/12/04

INSTALLATION INSTRUCTIONS

1. MOUNT SIDE FRAMES ON CONVEYOR FRAME OR CHUTE SO THAT FIRST MOUNTING HOLE IS 1/2 IN. AHEAD OF PULLEY CENTERLINE AND 4 IN. TO 7 IN. ABOVE THE BOTTOM SURFACE OF THE BELT.
2. MEASURE BETWEEN THE INSIDE SURFACES OF THE SIDES AND CUT THE SUPPORT TUBE 1/4 IN. SHORTER THAN THIS MEASURED DIMENSION.
3. PLACE THE SUPPORT TUBE IN THE SLIDE SOCKETS AND MARK FOR THE TWO BOLTS.
4. DRILL THE ENDS OF THE TUBE WITH A 5/16 DIA DRILL AND BOLT SUPPORT TUBE IN PLACE.
5. ADJUST VIPER UP UNTIL EVEN CONTACT IS MADE WITH THE BELT, BUT NO PRESSURE APPLIED.
6. TO LOAD THE VIPER, TURN THE RODS 20 TURNS AND LOCK USING NUTS 'B'.
7. LOCATE NUTS 'B' 1-3/4 IN ABOVE SLIDE TO PREVENT THE SUPPORT FROM CONTACTING THE BELT.
8. THE VIPER WILL NOW SELF ADJUST UNTIL THE STOP NUTS ARE CONTACTED, AT WHICH POINT IT CAN BE TURNED OVER AND READJUSTED PER STEPS 5 THRU 7.



COMPACT RATCHET MODELS	COMPACT RATCHET MODELS	DIMENSION TABLE		QTY	PART 'A'	DIVE 'E' (PART 'A')	SEPART 'B'	PART 'C'
		SW	MAX					
LP-12SC	LP-12SC	12(209)	41(1043)	2	4010002	CS10025	WB-12	4011037
LP-16SC	LP-16SC	16(406)	49(1243)	2	4010005	CS10025	WB-16	4011039
LP-18SC	LP-18SC	18(457)	47(1194)	3	4010006	CS10025	WB-18	4011041
LP-20SC	LP-21SC	20(508)	49(1243)	3	4010007	CS10025	WB-20	4011041
LP-24SC	LP-24SC	24(611)	53(1346)	3	4010008	CS10025	WB-24	4011042
LP-30SC	LP-31SC	30(762)	59(1499)	4	4010009	DS10027	WB-30	4011043
LP-36SC	LP-36SC	36(913)	65(1661)	4	4010010	DS10027	WB-36	4011044
LP-42SC	LP-42SC	42(1067)	71(1800)	5	4010011	DS10027	WB-42	4011045
LP-48SC	LP-48SC	48(1219)	77(1956)	5	4010012	DS10027	WB-48	4011046
LP-54SC	LP-54SC	54(1372)	83(2109)	5	4010013	DS10027	WB-54	4011047
LP-60SC	LP-61SC	60(1524)	89(2263)	6	4010014	DS10027	WB-60	4011048
LP-72SC	LP-72SC	72(1878)	101(2563)	7	4010015	DS10027	WB-72	4011049

ALL DIMS IN □ ARE IN MM.
 OPTIONAL RATCHET ADJUSTMENT AVAILABLE.
 OPTIONAL URETHANE BLADE AVAILABLE.

1	CS10025	CS10025	SLIDE SOCKET	2
2	WB-12	WB-12	WIPER BAR	2
3	WB-16	WB-16	WIPER BAR	2
4	WB-18	WB-18	WIPER BAR	2
5	WB-20	WB-20	WIPER BAR	2
6	WB-24	WB-24	WIPER BAR	2
7	WB-30	WB-30	WIPER BAR	2
8	WB-36	WB-36	WIPER BAR	2
9	WB-42	WB-42	WIPER BAR	2
10	WB-48	WB-48	WIPER BAR	2
11	WB-54	WB-54	WIPER BAR	2
12	WB-60	WB-60	WIPER BAR	2
13	WB-72	WB-72	WIPER BAR	2

THIS DRAWING IS COMPUTER GENERATED
 CONVEYOR COMPONENTS CO.
 130 SELTZER RD. CROSVELL, ME 04842

DATE: 02/04/91
 DRAWN BY: J.K.
 CHECKED BY: J.K.

THIS PRINT IS THE PROPERTY OF CONVEYOR COMPONENTS CO. AND MUST NOT BE USED IN WHOLE OR PART WITHOUT WRITTEN PERMISSION.

PART NO. D0100037
 SCALE: N.A.
 SHEET: 1-1

DWG. NO. D0100037