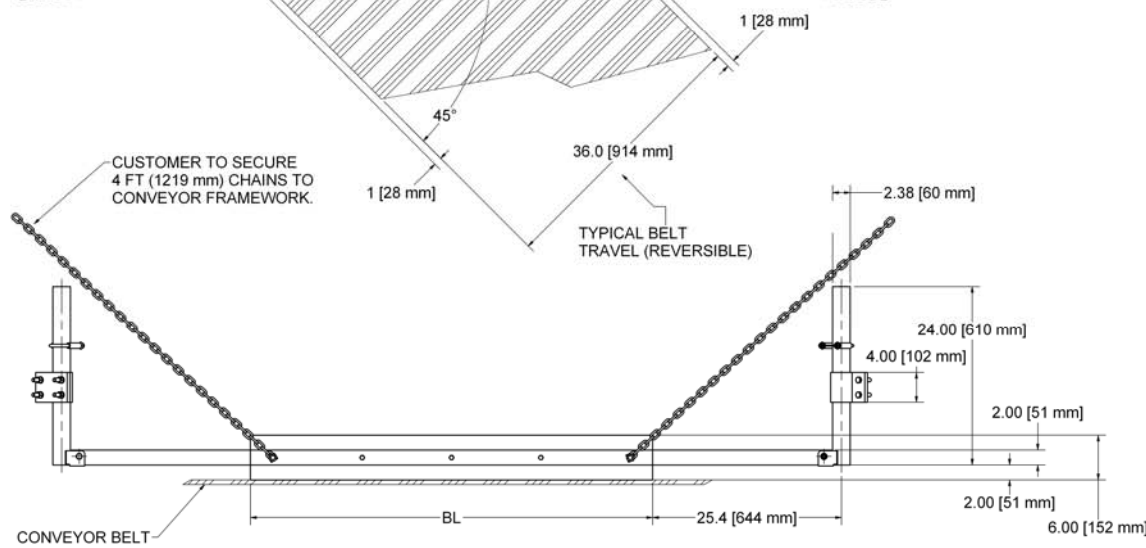
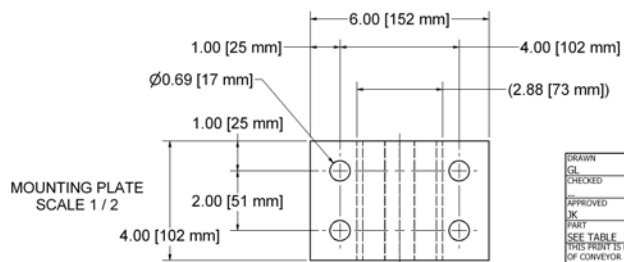


VIEW 3
SCALE 1 / 16



VIEW 1
SCALE 1 / 8

MODEL DPT-36 IN TYPICAL 45°
INSTALLATION SHOWN.
CUSTOMER MAY INSTALL AT
APPROPRIATE ANGLE FOR
SITE APPLICATION.



MOUNTING PLATE
SCALE 1 / 2

BLADE LENGTHS			
MODEL	Part Number	BL	BL mm
DPT-12	WBD-12	20 in	305 mm
DPT-16	WBD-16	25 in	406 mm
DPT-18	WBD-18	29 in	457 mm
DPT-20	WBD-20	32 in	508 mm
DPT-24	WBD-24	37 in	610 mm
DPT-30	WBD-30	46 in	762 mm
DPT-36	WBD-36	54 in	914 mm
DPT-42	WBD-42	63 in	1067 mm
DPT-48	WBD-48	71 in	1219 mm
DPT-54	WBD-54	80 in	1372 mm
DPT-60	WBD-60	88 in	1524 mm
DPT-72	WBD-72	105 in	1829 mm
DPT-84	WBD-84	122 in	2134 mm
DPT-96	WBD-96	139 in	2439 mm
DPT-102	WBD-102	147 in	3734 mm

DRAWN	3/15/2010	 Conveyor Components Company 130 Setzer Road Crossed, Michigan, U.S.A., 48422
CHECKED		
APPROVED	3/17/2010	TITLE
PART		DPT: PRODUCT DRAWING
SEE TABLE		Drawing is computer generated, and print might not be to scale
THIS PRINT IS PROPERTY		SIZE
OF CONVEYOR		D
COMPONENTS CO., AND		DWG NO
MAY NOT BE USED IN		D0240010.dwg
WHOLE OR PART WITHOUT		SCALE
WRITTEN PERMISSION.		SHEET 1 OF 1