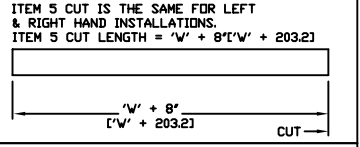
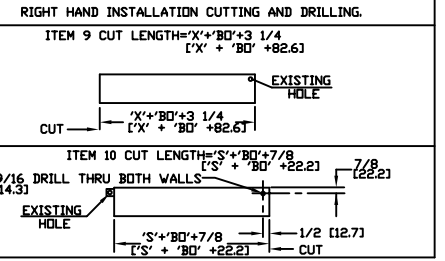
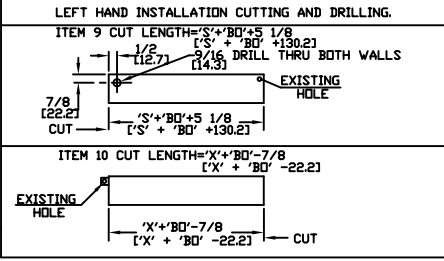


DWG. NO.	D0360002	SHT.	REV.	REVISIONS		
REV.	ECO.	DESCRIPTION	DATE	BY	APP'D	
M	1949	RENUMBER PARTS 15 & 16	07/06/01	GL	JK	

CUSTOMER CUTTING AND DRILLING INSTRUCTIONS
 THE FOLLOWING DISTANCES MUST BE KNOWN BEFORE COMMENCING THE CUTTING AND DRILLING OPERATIONS ON THE LEFT HAND (LH) INSTALLATION SHOWN.
 A RIGHT HAND INSTALLATION WILL HAVE ITEMS 1, 2, 3 & 4 ON ENDS OPPOSITE THOSE SHOWN ON THIS DRAWING. REFER TO DWG. D-36-20.
 'S' = DISTANCE FROM BELT EDGE TO MOUNTING SURFACE OF SERVICE END.
 'X' = DISTANCE FROM BELT EDGE TO MOUNTING SURFACE OF OPPOSITE END.
 'BD' = DIMENSION FROM 'DIMENSION TABLE' (BELT OVERHANG)
 'W' = DISTANCE BETWEEN MOUNTING SURFACES.



DIMENSION TABLE

'BW'	'W'		'BD'
	MAX	MIN	
12 [304.8]	42 [1066.8]	15 [381.0]	1/2 [12.7]
18 [457.2]	48 [1219.2]	21 [533.4]	1 [25.4]
24 [609.6]	54 [1371.6]	27 [688.8]	1 1/2 [38.1]
30 [762.0]	60 [1524.0]	33 [838.2]	2 [50.8]
36 [914.4]	66 [1676.4]	39 [990.6]	0 [00.0]
42 [1066.8]	72 [1828.8]	45 [1143.0]	1/2 [12.7]
48 [1219.2]	78 [1981.2]	51 [1295.4]	1 [25.4]
54 [1371.6]	84 [2133.6]	57 [1447.8]	1 1/2 [38.1]
60 [1524.0]	90 [2286.0]	63 [1600.2]	2 [50.8]
66 [1676.4]	96 [2438.4]	69 [1752.6]	0 [00.0]
72 [1828.8]	102 [2590.8]	75 [1905.0]	1/2 [12.7]
78 [1981.2]	108 [2743.2]	81 [2057.4]	1 [25.4]
84 [2133.6]	114 [2895.6]	87 [2209.8]	1 1/2 [38.1]
96 [2438.4]	126 [3200.4]	99 [2514.6]	0 [00.0]

FINAL ASSEMBLY COMPONENTS

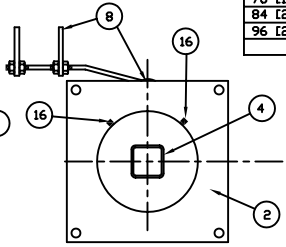
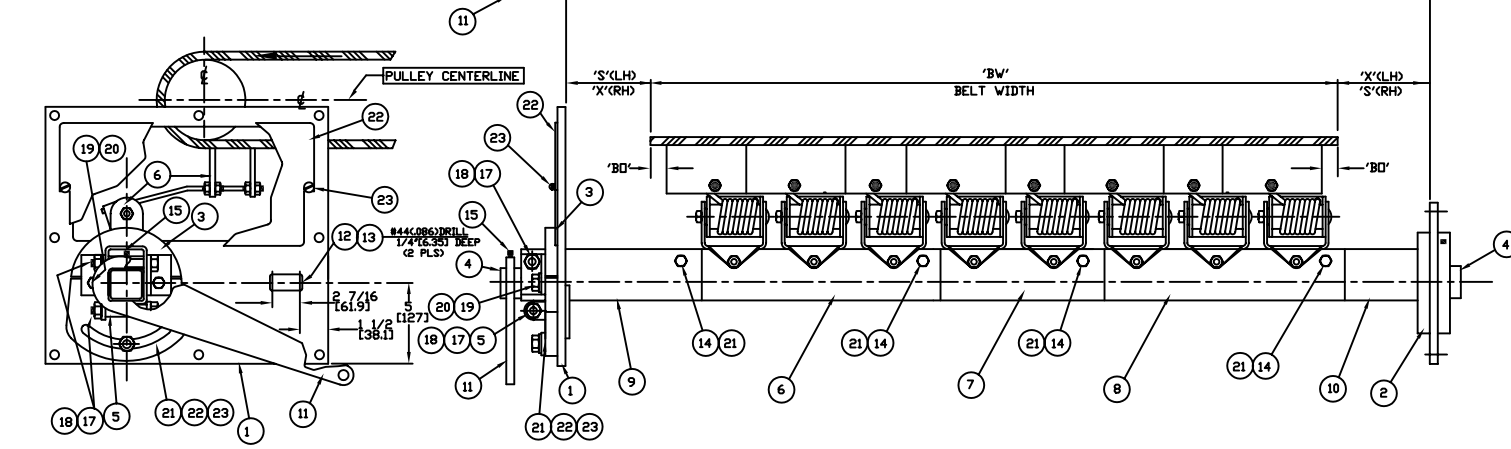
ITEM	PART NO.	DESCRIPTION	QTY
1	C-36-13	SERVICE FLANGE PLATE	1
2	C-36-2	END FLANGE ASSEMBLY	1
3	C-36-11	SUPPORT FLANGE ASSEMBLY	1
4	B-36-7-(BW)	SUPPORT TUBE	1
5	A-36-3	SPACER ROLLER	1
6	C-36-9	15" TUBE SECTION ASSEMBLY	'B'
7	C-36-10	10" TUBE SECTION ASSEMBLY	'A'
8	C-36-25	15" REVERSE TUBE ASSEMBLY	'C'
9	B-36-15	SERVICE END TUBE	1
10	B-36-14	END TUBE WELDMENT	1
11	B-19-2	PRESSURE HANDLE	1
12	A-37-7	BELT CLEANER NAMEPLATE	1
13	A-201-6111	#2 X 3/16 DRIVE RIVET	2
14	A-201-1252	3/8-16 X 3 1/4 HEX HEAD CAP SCREW	'D'
15	A-201-1209	3/8-16 X 1 SQ.HD. SET SCREW	1
16	A-201-1205	3/8-16 X 2 1/4 SQ.HD. SET SCREW	2
17	A-201-1308	1/2-13 X 4 HEX HEAD CAP SCREW	2
18	A-201-4404	1/2-13 HEX LOCKNUT/N.I.	2
19	A-201-1201	3/8-16 X 1 HEX HEAD CAP SCREW	2
20	A-201-3501	3/8 SPLIT LOCKWASHER	2
21	A-201-4203	3/8-16 X 1 HEX LOCKNUT/N.I.	'D'
22	B-36-32	PLATE COVER DDOR	1
23	A-201-1078	1/4-20 X 1/2 SPADE HD. THUMBSCREW	2
24	A-37-8	FASTENING LUG	1
25	A-202-8816	JACK CHAIN #14 BRITE	12"

MOUNTING HARDWARE

A-201-1302	1/2-13 X 2 HEX HEAD CAP SCREW	12
A-201-4401	1/2-13 HEX NUT	12
A-201-3502	1/2 SPLIT LOCKWASHER	12

QUANTITY TABLE

BELT WIDTH	'A'	'B'	'C'	'D'
12 [304.8]	1	0	0	2
18 [457.2]	0	1	0	2
24 [609.6]	2	0	0	3
30 [762.0]	1	1	0	4
36 [914.4]	2	1	0	4
42 [1066.8]	1	1	1	4
48 [1219.2]	0	2	1	4
54 [1371.6]	2	1	1	5
60 [1524.0]	1	2	1	5
66 [1676.4]	2	2	1	6
72 [1828.8]	1	2	2	6
78 [1981.2]	2	2	2	7
84 [2133.6]	1	3	2	7
96 [2438.4]	1	3	3	8



THIS DRAWING IS COMPUTER GENERATED.

DWN	RM	DATE	06/10/82	CONVEYOR COMPONENTS CO. 130 SELTZER RD, CROSWELL, MI 48422
CKD		DATE		
APD	JK	DATE	08/05/82	RFA-358 CHUTE MOUNT TELESCOPING BELT CLEANER

THIS PRINT IS THE PROPERTY OF CONVEYOR COMPONENTS CO. AND MUST NOT BE USED IN WHOLE, OR PART WITHOUT WRITTEN PERMISSION.

PLEASE RETURN ON DEMAND. SCALE N.A. SHT. 1-1

REF DWG C0360015 FOR MOUNTING DIMENSIONS.
 REF DWG D0360003 FOR REFERENCE DIMENSIONS.
 ALL DIMS IN □ ARE IN MILLIMETERS.
 LEFT HAND (LH) INSTALLATION SHOWN.

DWG. NO. D0360002 SHT. 1 OF 1