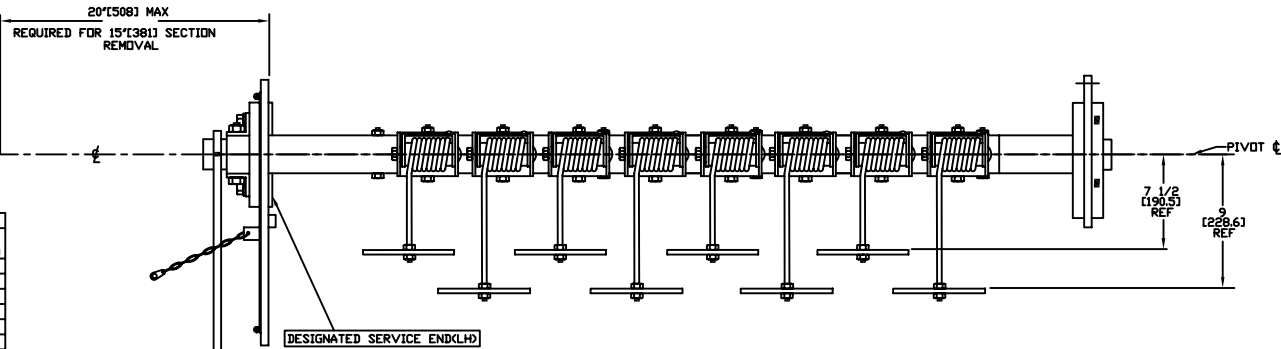
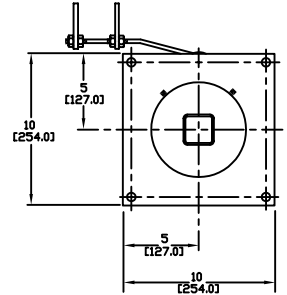
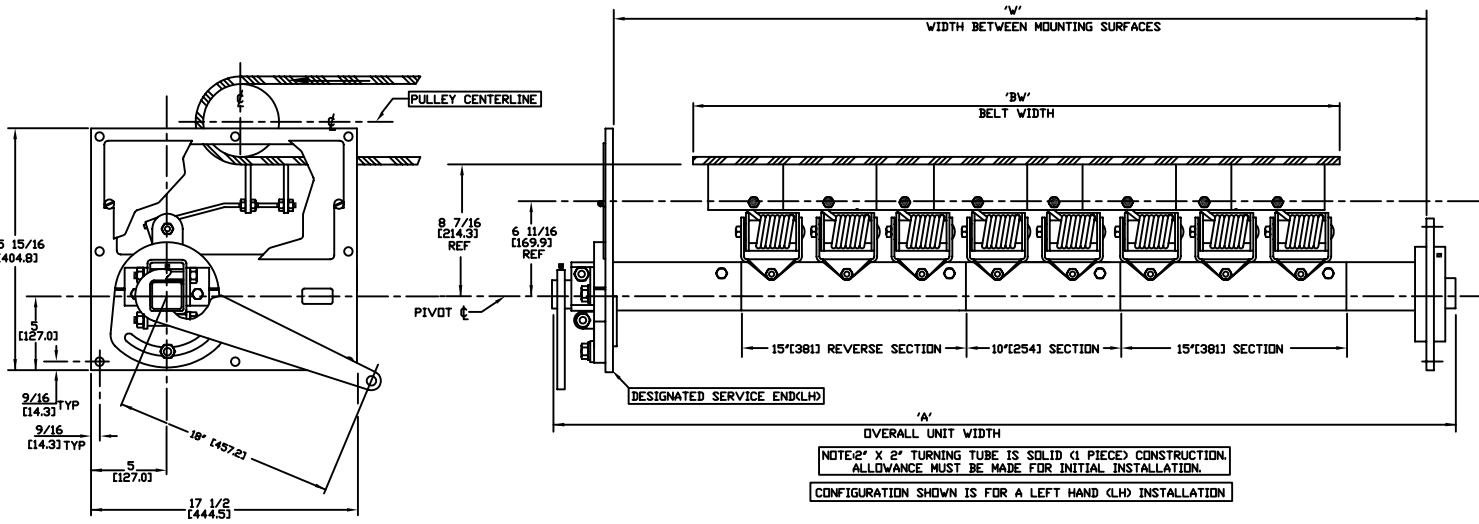


REVISIONS					
REV	E.C.D. NO.	DESCRIPTION	BY	APPD	DATE
I	0179	RE-DRAWN TO COMPUTER	RM	JK	8-9-89
J	0706	ADD METRIC DIM	RM	JK	7-31-92
K	10369	ADD 96" BELT SIZE	RM	JK	4-25-94



DIMENSION TABLE			
'BW'	'W'		'A'
BELT WIDTH	MAX	MIN	MAX UNIT WIDTH
12 [304.8]	42 [1066.8]	15 [381.0]	54 [1371.6]
18 [457.2]	48 [1219.2]	21 [533.4]	60 [1524.0]
24 [609.6]	54 [1371.6]	27 [685.8]	66 [1676.4]
30 [762.0]	60 [1524.0]	33 [838.2]	72 [1828.8]
36 [914.4]	66 [1676.4]	39 [990.6]	78 [1981.2]
42 [1066.8]	72 [1828.8]	45 [1143.0]	84 [2133.6]
48 [1219.2]	78 [1981.2]	51 [1295.4]	90 [2286.0]
54 [1371.6]	84 [2133.6]	57 [1447.8]	96 [2438.4]
60 [1524.0]	90 [2286.0]	63 [1600.2]	102 [2590.8]
66 [1676.4]	96 [2438.4]	69 [1752.6]	108 [2743.2]
72 [1828.8]	102 [2590.8]	75 [1905.0]	114 [2895.6]
78 [1981.2]	108 [2743.2]	81 [2057.4]	120 [3048.0]
84 [2133.6]	114 [2895.6]	87 [2209.8]	126 [3200.4]
96 [2438.4]	126 [3200.4]	99 [2514.6]	138 [3505.2]



NOTE: 2" X 2" TURNING TUBE IS SOLID (1 PIECE) CONSTRUCTION. ALLOWANCE MUST BE MADE FOR INITIAL INSTALLATION.  
CONFIGURATION SHOWN IS FOR A LEFT HAND (LHD) INSTALLATION

NOTE: ALL DIMENSIONS IN [ ] ARE IN MILLIMETERS

REFER TO DWGS. D-036-0002 & C-036-0015 FOR INSTALLATION INSTRUCTIONS.

THIS DRAWING IS COMPUTER GENERATED					
DWN	RM	DATE	8-3-82	CONVEYOR COMPONENTS COMPANY	
CRD		DATE		130 SELTZER ROAD, CROSWELL, MI. 48422	
APPD	JK	DATE	8-5-82	MODEL RFA-358 CHUTE MOUNT	
				TELESCOPING BELT CLEANER	
THIS PRINT IS THE PROPERTY OF CONVEYOR COMPONENTS CO. AND MUST NOT BE USED IN WHOLE OR PART WITHOUT WRITTEN PERMISSION. PLEASE RETURN ON DEMAND.				DWG NO.	REV
				D-036-0003	K
				SCALE	1/4"=1'