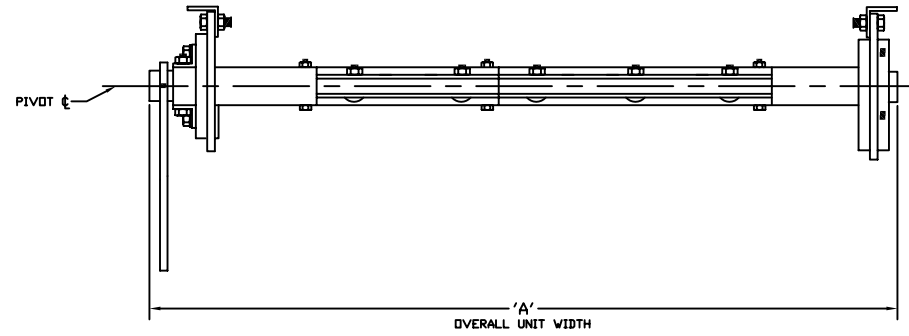
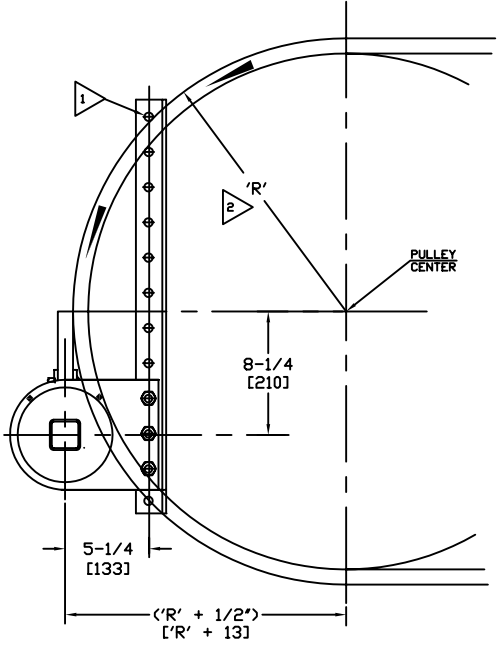
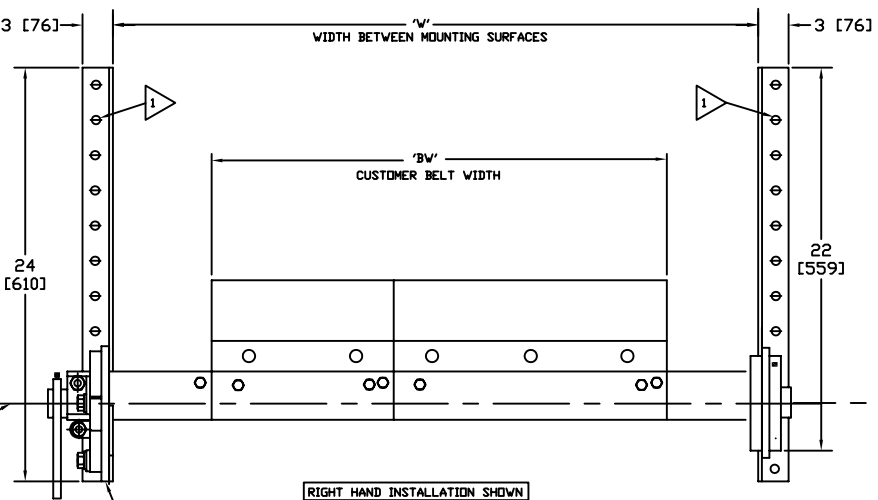
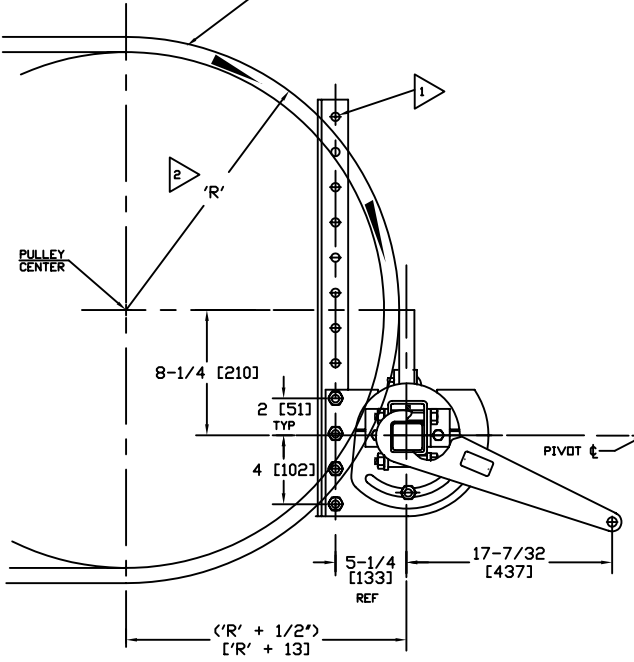


REVISIONS					
REV.	E.C.D. NO.	DESCRIPTION	BY	APP'D	DATE
H	1499	ADDED METRIC DIM	EL	JK	06/10/97



DIMENSION TABLE				
BELT WIDTH 'BW'	'W' WIDTH BETWEEN MOUNTING SURFACES		'A' UNIT WIDTH	
	MAX.	MIN.		
12 [305]	42 [1067]	15 [381]	48-1/4 [1226]	
18 [457]	48 [1219]	21 [533]	54-1/4 [1378]	
24 [610]	54 [1372]	27 [686]	60-1/4 [1530]	
30 [762]	60 [1524]	33 [838]	66-1/4 [1683]	
36 [914]	66 [1676]	39 [991]	72-1/4 [1835]	
42 [1067]	72 [1829]	45 [1143]	78-1/4 [1988]	
48 [1219]	78 [1981]	51 [1295]	84-1/4 [2140]	
54 [1372]	84 [2134]	57 [1448]	90-1/4 [2292]	
60 [1524]	90 [2286]	63 [1600]	96-1/4 [2445]	
66 [1676]	96 [2438]	69 [1753]	102-1/4 [2597]	
72 [1829]	102 [2591]	75 [1905]	108-1/4 [2750]	
78 [1981]	108 [2743]	81 [2057]	114-1/4 [2902]	
84 [2134]	114 [2896]	87 [2210]	120-1/4 [3054]	

BELT SURFACE
(POSITION & DIRECTION
DENOTES R.H. INSTALLATION)
REFER TO D-36-20



- NOTES:
- 1 ALL MOUNTING HOLES IN MOUNTING ANGLES ARE 9/16 DIAMETER TO ACCEPT 1/2-13 BOLTS.
 - 2 'R' IS EQUAL TO THE RADIUS OF THE PULLEY PLUS THE LAGGING AND BELT THICKNESS.

REFER TO D-039-0014 FOR ASSEMBLY AND FURTHER INSTALLATION INSTRUCTIONS.

REFER TO DWG. D-036-0020 FOR L.H. & R.H. INSTALLATIONS. ALL DIMS IN [] ARE IN MILLIMETERS.

THIS DRAWING IS COMPUTER GENERATED.

DWN RM	DATE 1-19-83	CONVEYOR COMPONENTS COMPANY
CKD	DATE	130 SELTZER ROAD, CROSVELL, MI. 48422
APD/CLD	DATE 1-20-83	MODEL RLP-368 HANGER MOUNT
REFERENCE & INSTALLATION DIMENSIONS		
PART NO.	DWG. NO.	REV
	D-039-0007	H
SCALE 1/4"=1"		M McNALLY SH1.