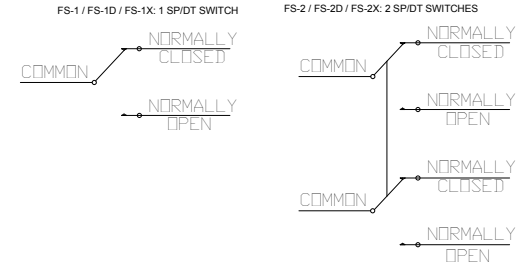
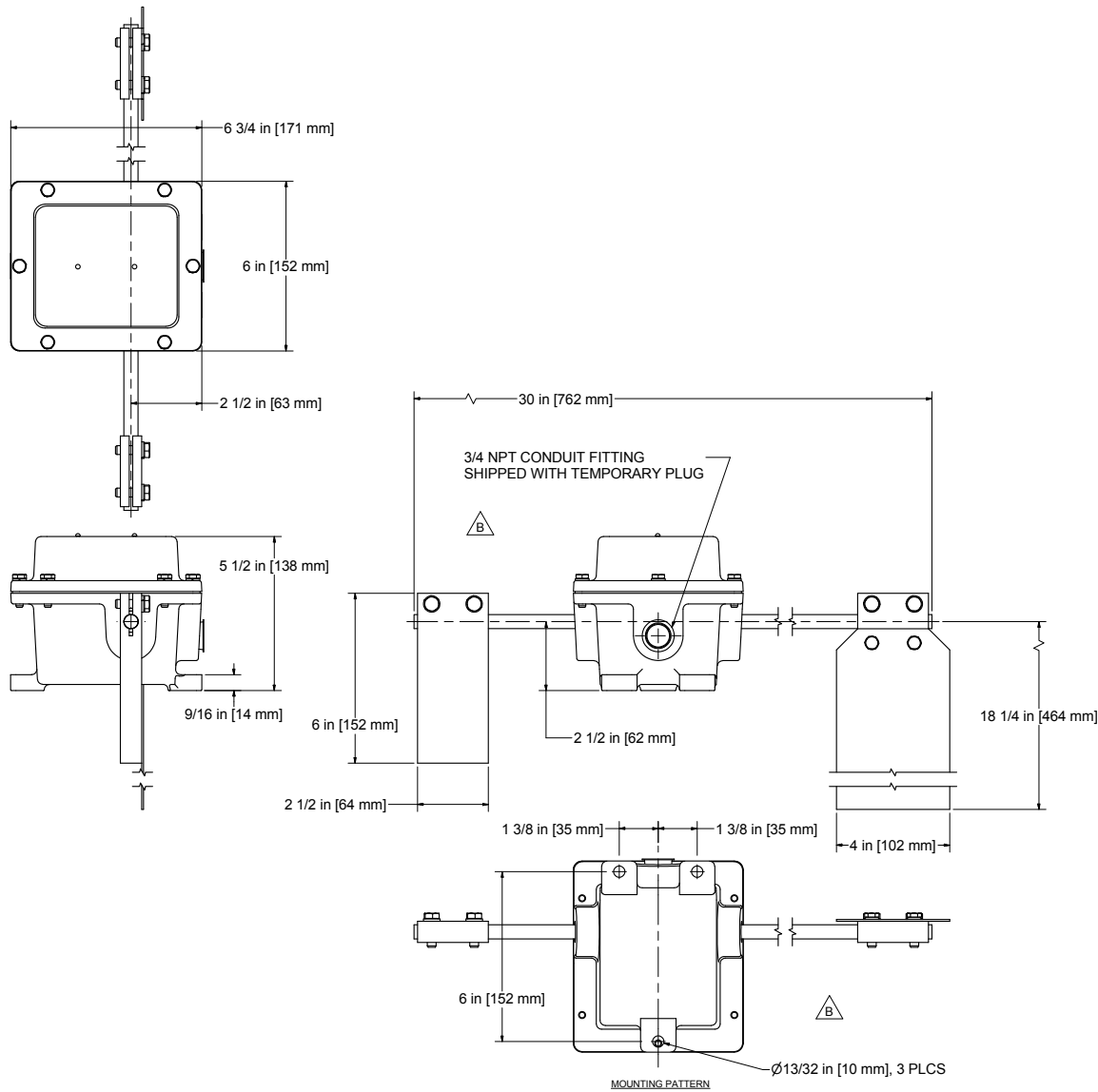


REV	ECO	DESCRIPTION	DATE	BY	APPD
B	15758	CHANGE MOUNTING VIEW	8/7/2014	JK	JK

ELECTRICAL DATA



SP/DT CONTACT RATINGS:
 20 A, 125/250/480 V AC
 10 A, 125 V AC INDUCTIVE
 1 HP, 125 V AC; 2 HP, 250 V AC
 1/2 A, 125 V DC; 1/4 A, 250 V DC



ALL DIMS FOR REFERENCE ONLY.
 EPOXY COATING AVAILABLE.
 OTHER SHAFT LENGTHS AVAILABLE.
 TYPE 4X ENCLOSURE SHOWN.
 TYPE 4X AND CLASS II, GROUPS E, F & G
 (DUST-IGNITION PROOF) MODELS AVAILABLE.
 CLASS I, GROUPS C & D, CLASS II, GROUPS E, F & G
 HAZARDOUS LOCATIONS MODELS AVAILABLE.

DRAWN	11/25/2002	 Conveyor Components Company Division of Material Control, Inc. 130 Seltzer Road, Coovert, Michigan 48422 U.S.A.
CHECKED	8/8/2014	
APPROVED	11/25/2002	TITLE
PART		MODEL FS SP/DT PRODUCT DRAWING
THIS PRINT IS PROPERTY OF CONVEYOR COMPONENTS CO., AND MAY NOT BE USED IN WHOLE OR PART WITHOUT WRITTEN PERMISSION.		Drawing is computer generated, and print might not be to scale. SIZE: DWG NO: D0210031.dwg SCALE: SHEET 1 of 1